



KINGSWOOD EAGLES WAG

December 16-20

MONDAY

16



BRRR day-
wear a fun sweater!



TUESDAY

17

Pyjama Day!
wear your
jammies!



Pancake breakfast
Regular start to
the school day!

WEDNESDAY

18

Coach
Dhillon
basketball
for grade
6/7s



THURSDAY

19



Band
concert
@ 1:30pm

Hot LUNCH

Learning Updates
Published



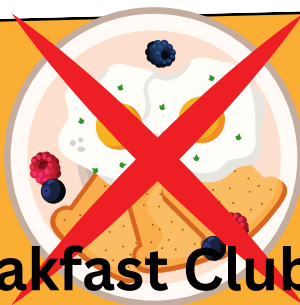
Garden Club
Afterschool

FRIDAY

20



Pyjama
day #2!
Bring a
stuffie!



**Breakfast Club
CANELLED!**

Next week...

Monday, Jan. 6. --FIRST DAY BACK AT SCHOOL

Tuesday, Jan. 7--

Wednesday, Jan. 8--

Thursday, Jan. 9--

Friday, Jan. 10--

604-668-6220

If your child is absent or will be late
please call this number and leave a
message. State your child's name,
division and teacher's name.

**Early
Warning
LINE**

PAC

news



Orders are open for January--
get ordering!



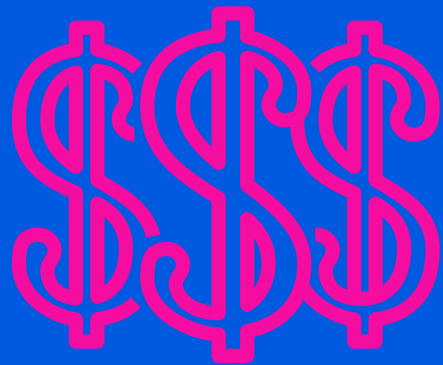
[Kingswood MunchaLunch](#)

PAC FACTS

DID YOU KNOW?

This fall our PAC has...

- had 13 hot lunches before winter break
- held 4 fundraisers (17 if you include lunch)
- hosted a movie night
- had 3 meetings
- provided \$150 of funds per teacher
- installed a communication board on our playground

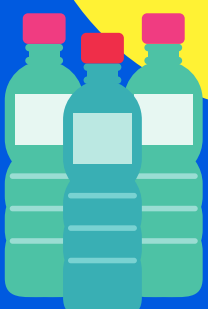


*did you
know?*



Kingswood PAC has an account with Ironwood Bottle Depot. If you are returning bottles and would like to donate the funds to Kingswood PAC--simply type Kingswood PAC into the computer, print out a label with the information and stick it to your bag of bottles. The money will be placed in the Kingswood PAC account.

Thank you for your support!



SCENES

IN THE HALLWAY

Division 9--Reindeers



Division 9 watercolours



winter

PERFORMANCE



Thank you to all of our families that were able to attend.

We are working on uploading a video of the performance and then will send a link to families so that all family may view it--Look for it in your email!

Bulletin Boards

By

Kingswood Staff





Hanukkah

December 25th - January 2nd

Hannukah, or the Festival of Rededication, celebrates the rededication of the Temple in Jerusalem after its defilement by the Syrian Greeks in 164 BCE. The eight-day festival has become a beloved and joyous holiday. It is also known as the Festival of Lights and usually takes place in December, at the time of year when the days are shortest in the northern hemisphere.



Christmas December 25th

A Christian festival celebrating the birth of Jesus. Since the early 20th century, Christmas has also been observed as a cultural and secular holiday by Christians and non-Christians.



Monday-Sweater Day

Tuesday-PJ Day 🍳

Wednesday-Plaid/Checkers

Thursday-Winter Day (clothes and gear) ❄️

Friday-PJ Day (again)!!!

Inclement Weather: School Closure Notifications

The district will try to determine school closures due to inclement weather by 6:30 a.m. Updates will be delivered using social media and school and district websites.

No radio or television announcement will be made saying that schools are open. Only school closures will be announced by the media. To reach as many people as possible – as quickly as possible – we work closely with our

local media to share information. Listen to local radio stations and follow local news outlets online to also get

information about the impact of severe weather or emergencies in our schools. If snowfall begins while school is in session, in most circumstances, schools will remain

OPEN until the end of the school day.

If schools are open, and you wish to keep your child home due to weather conditions, you may do so. Please let your school know of this decision.

Parents/guardians are responsible for their child's safe travel to school.

恶劣天气停课通知

学区将于清晨6:30前决定是否因恶劣天气而停课。最新消息将通过社交媒体、学校及学区网站发布。

Facebook: <https://www.facebook.com/RichmondSD38/>

Twitter: <https://twitter.com/RichmondSD38>

电台和电视台不会播报学校的开放情况，只会通知关校停课的消息。为确保信息尽快传达到更多人，我们与本地媒体紧密合作，及时分享信息。建议您收听本地的电台广播，关注网络新闻媒体，以获取最新的恶劣天气对学校影响或紧急情况的通知。

如果降雪发生在学生在校期间，通常情况下，学校会正常开放至放学时间。

如果学校保持开放，但您由于天气状况希望让孩子留在家，您可以这样做。请通知学校您的决定。

家长和监护人应负责孩子上学途中的交通安全。



December 21st Winter Solstice



The shortest period of daylight and the longest night of the year. This date is celebrated by, and has significance to, multiple cultures and religions.

CARE AND SUPPORT FOR FAMILIES



FAMILY

Peer Support in Richmond

Connecting With Our Kids

What anxiety and social isolation is, what it looks and feels like for our children at home. Families can learn strategies to try at home.

当孩子的焦虑导致社会孤立行为时，养育孩子对每个人来说都是困难的。家长和辅导员谈论什么是焦虑和社会孤立，它对我们的孩子和在家里会是什么样子和感觉，家庭可以尝试的策略，以及与孩子建立良好的关系和联系有多么重要。欢迎您参加这週的课程！

FAMILYSMART.CA

SWIS RICHMOND SCHOOL DISTRICT
Settlement Workers
In Schools

Wednesday, December 11, 2024

10:00 am to 11:30 am

TO REGISTER

CLICK HERE



IN PARTNERSHIP WITH

December 10th

International Human Rights Day

A celebration of the day on which the United Nations General Assembly (UNGA) adopted the Universal Declaration of Human Rights in 1948.



THE MIDDLE YEARS DEVELOPMENT INSTRUMENT (MDI) IS COMING IN
JANUARY/MID-MARCH!

The Richmond School District has partnered with the Human Early Learning Partnership (HELP) at the University of British Columbia to measure and promote children's social and emotional development, health, well-being, and assets through the Middle Years Development Instrument (MDI). The Middle Years Development Instrument (MDI) is a self-report questionnaire that asks children in middle childhood about their thoughts, feelings and experiences. The MDI is the first survey of its kind to gather information about the lives of children both in school, in the home and in the community, from their own perspective. The survey questions align with the BC Ministry of Education's K-12 curriculum, which includes a focus on promoting children's personal and social competencies.

Grade 5 and 8 students are invited to complete the MDI during class time between:
January 14th and March 14th, 2025.

For more information and to view the questionnaires:

<https://earlylearning.ubc.ca/monitoring-system/mdi/mdi-overview/>

Parent FAQs:

<https://earlylearning.ubc.ca/monitoring-system/mdi/parent-caregiver-info/>

If you don't want your child to participate, please contact your child's teacher, fill out the withdrawal form at the end of the parent/guardian informed passive consent letter, or contact the MDI project staff at mdi@help.ubc.ca.

Version 2024-25

RCMP/ staff vs student volleyball

