



KINGSWOOD EAGLES WAG

September 23-27

MONDAY

23

Bring your coins and change for Terry Fox.

Toonies, loonies, quarters, dimes and nickels!



TUESDAY

24

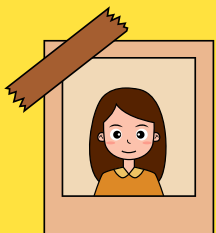
Weekly reminder: Lunch Drop off

If you will be dropping off a lunch for your child after the start of the day, please leave it on the table just past the office.

You can label the lunch bag with the paper/pencil provided. Students are reminded to check the table if they do not have a lunch. Thank you!

WEDNESDAY

25



Individual Student Photo Day

THURSDAY

26

FRIDAY

27

Terry Fox Run @ 1:30pm

Parents are welcome!



Next week...

Monday, Sept. 30--National Day for Truth and Reconciliation
School Closed for Holiday

Tuesday, Oct. 1--

Wednesday, Oct. 2--

Thursday, Oct. 3--

Friday, Oct. 4--

604-668-6220

If your child is absent or will be late please call this number and leave a message. State your child's name, division and teacher's name.



**Early
Warning
LINE**

PAC NEWS

MunchaLunch Program

We are happy to announce that you will continue to place your hot lunch orders online using MunchaLunch.com!

You can pay for your orders online by credit card (Visa/Mastercard) OR debit-credit card or pre-paid credit card

RETURNING FAMILIES:

Returning parents can log in to their existing account here:

<https://munchalunch.com/login>.

NEW FAMILIES, PLEASE REGISTER:

1. Go to: <https://munchalunch.com/schools/kingswood> and click the “Register Here” button (as shown below). The system will guide you through.
2. After adding your children, click the green “Order Lunch!” button to order.
3. Next time, just click the “Login Here” button to access your account.

If you require a ‘2-school’ account (ie. You already have a MunchaLunch account at a different school and wish to ADD Kingswood to your account) please use this

link: <https://munchalunch.com/addaccount>.

Click ‘Add Second School’ to self-add Kingswood.

ORDERING INFORMATION:

- Online ordering will be OPEN starting September 13. All orders are due one week prior to the hot lunch date.
- If you need assistance with ordering, or do not have access to the internet, please contact Devinder at devindergill@hotmail.com

Please note if your child is ill on a lunch date, you are welcome to come and pick up their lunch by 12 PM; otherwise please consider it a donation for a child who does not have a lunch. Consistent with previous years, there are NO REFUNDS as this is a PAC fundraiser. We appreciate your support for our hot lunch program as the funds go towards general fundraising within the school.

We are always in need of Volunteers! There is a volunteer page in the online system where you can checkmark which dates you are available. The lunch coordinator will then contact you with a proposed schedule.

Our thanks to the Kingswood Elementary parent community for supporting this important fundraiser and to our wonderful Volunteers who help make this program a success!



Thank you to our PAC for providing and preparing oranges for the Terry Fox Run.



Thank you to Superstore for donating the oranges!



Fundraising OPT out form sent home Thursday, Sept. 19. Please look out for this!



Kingswood

STAFF LIST 2024-2025

Principal: Ms. Rooney

Head Administrative Assistant: Ms. MacCallum

Classrooms

Division 1-Grade 6/7--Mr. Taylor

Divisions 2 Grade 6/7--Mr. Leung

Division 3--5/6--Ms. McIver/TBA

Division 4-Grade 4/5--Ms. Arnsdorf

Division 5-Grade 3/4--Ms. Olding

Division 6-Grade 2/3--Ms. Conway

Division 7-Grade 2/3--Ms. Gaia

Division 8-Grade 1/2--Ms. Kargopolova

Division 9-Grade K/1--Ms. Loughed

Division 10-K--Ms. May/Ms. Piperni

Librarian/Prep/LRT--Ms. Lau

Band and music--Ms. Elliott

LRT/ELL

Ms. Ip, Mr. Chen and teachers TBA

Educational Assistants

Ms. Kirkbride, Ms. Johnson, Ms. Mccarthy, Ms.Oleksiew, Mr. Tang,
Mr. Kelm, Ms. Sandhu, Ms. Tamayose

Custodians

Mr. Aquino and Ms.

Additional Staff:

Counselor-Ms. Hunter

SLP-Ms. Markoff

Indigenous Success Teacher-Mr. Campbell

Inclusion Support Teacher-Ms. Joseph

Teacher Consultant-Ms. Leung

Noon Hour Supervisors-Mr. Geoff, Ms. Vicki and Ms. Lori

School Psychologist- Ms. Osman

Division 10



Cross Country



Cross country is an extra-curricular activity open to all students in grades 1-7. Students run various distances from 800m for our youngest to about 2000m for our Grade 6 and 7s. The season ends with a Fun Run at Garry Point Park where our runners get a chance to run against students the same age from schools across the district.

Practices

**Tuesdays and Thursdays at lunch
Please come to the gym for practice!**

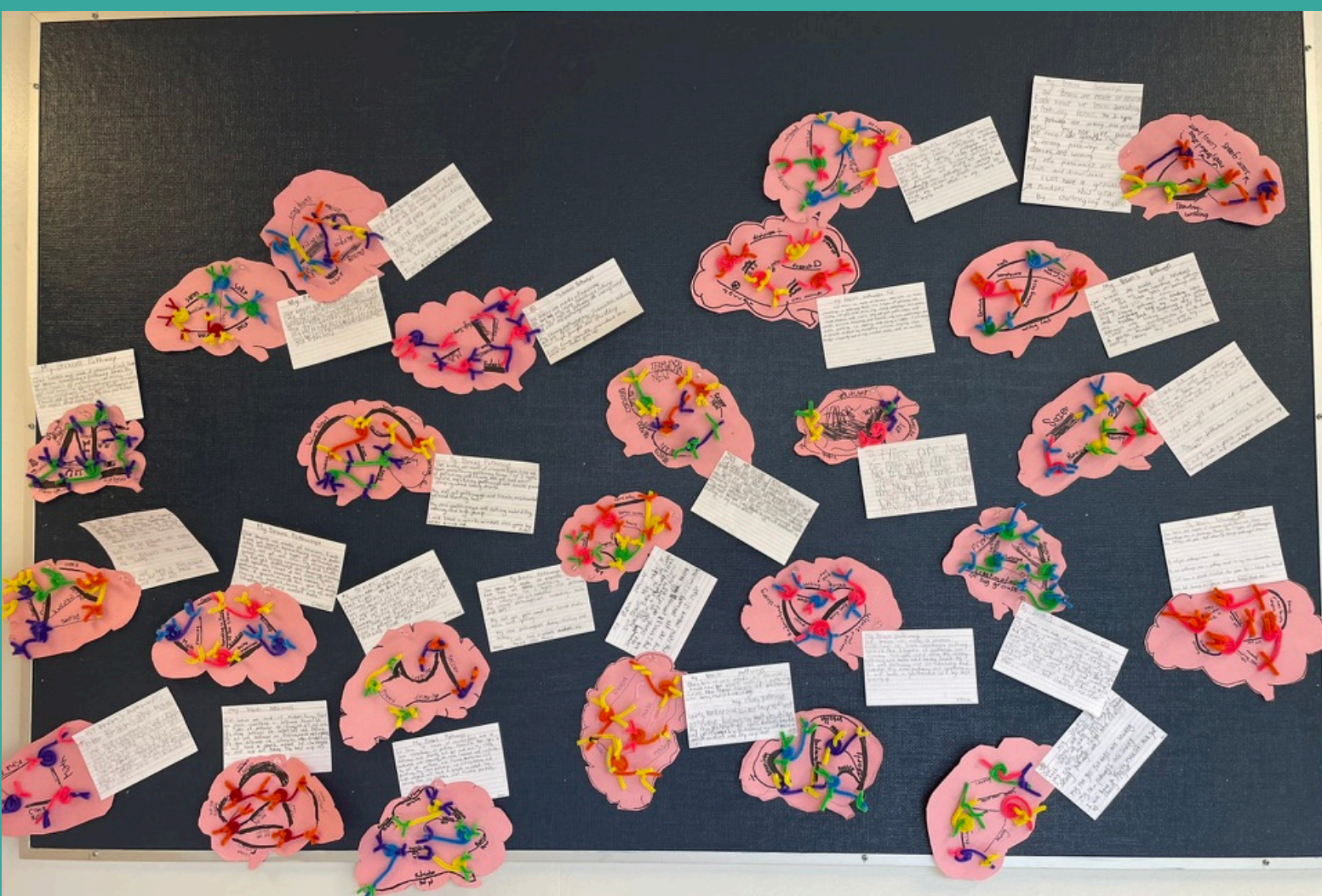
District Cross Country Fun Run

Tuesday, October 22nd @ Garry Point Park
Starts with grade 1s at approximately 3:15pm and moves up a grade about every 10 minutes.
Permission forms will come home next week.

Interested?

Come to our first practice on Tuesday, September 24
@ lunch time--11:50am

Division 4



KINGSWOOD IS A NUT FREE ZONE

Families--please be aware that Kingswood has several students and staff with NUT allergies. These allergies range from mild to SEVERE.

Please DO NOT SEND any type of nut products or nut butters to school (peanut butter, almond butter, cashew butter).

It has been noticed that several students have brought whole nuts--trail mix packages and nut butter sandwiches to school. Please be very mindful of the needs of our students and staff to ensure everyone's health.

Thank you very much for your very prompt attention to this matter.



Division 10



DIVISION 8



DIVISION 5



PARKING LOT SAFETY REMINDERS



When cars are parked in the roundabout, district buses cannot come into the parking lot.

Our school bus cannot drive safely through the parking lot to get to the bus pad, so it is parked on the street.

Please do not park on the buspad.



NO PARKING ON THE BUS PAD



Parking in this corner makes it very difficult for other cars to move past. This can cause a traffic jam throughout the parking lot.

Leaving your car unattended-- or PARKED, makes it very difficult for our bus to get through and makes it unsafe for our students and families.



DROP OFF AND PICK UP AREA DO NOT PARK YOUR CAR AND LEAVE IT.

A YELLOW LINE MEANS NO PARKING.



PLEASE DO NOT PARK CARS HERE

Parking is leaving your car unattended.

Let's continue to work together to keep our parking lot and drop off zones SAFE for our entire community.



Tales from the library

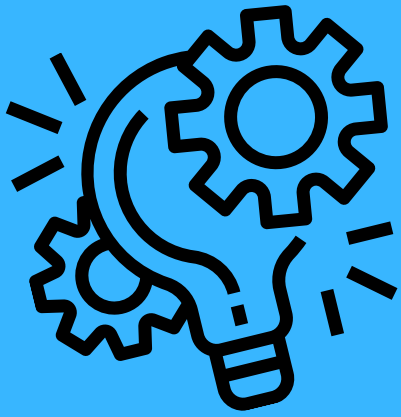


Library schedule for Kingswood Elementary

Tuesday: Div 3, 5, and 7

Wednesday: Div 10, 9, 8, 6, and 2

Thursday: Div 1, and 4



Questions about
technologies

If families have concerns about technology use at home and appropriate media choices, please visit this website [Common Sense Media](#). It rates various apps and media for families. You are also always welcome to contact me.
Happy Reading

LIBRARY

Ms Lau

Student and Family Affordability and Feeding Futures Fund



This past spring, the provincial government announced a renewal of one-time funds for the Student and Family Affordability Fund. This fund is designed to assist families who require financial assistance with school-related costs in the following areas:

- School and course fees
- School supplies and course materials
- Field trips
- School-related extracurricular opportunities
- Clothing and footwear required for sports and school activities
- PAC Hot Lunches

Please reach out to Ms. Joanne Rooney @ jrooney@sd38.bc.ca if you are in need of assistance. As always, all requests will be treated with dignity and your privacy will be respected. We want to work with our families to ensure that our students, your children, have everything they need in order to be successful at school. Please do not hesitate to reach out if we can help.

DIVISION 10



Students who carry an Epi Pen and/or Puffer last year will receive a new form for 2024/2025 sometime next week. Please fill out both sides of the form and attach an original prescription label on the form. Parents can go to their pharmacy to ask for an extra label. Students who didn't receive a form but need one for this school year can come to the office to ask for a form. Please contact Ms. McCallum, if you have any questions.



Student Cell Phones and Electronic Devices



We acknowledge that many of our older students have personal cell phones. Please note, the district has a new policy in place for personal digital devices. Please see below.

Elementary Schools (K-7):

- Students should not have personal digital devices in their possession during the school day unless permission is granted by the supervising staff for educational purposes. This includes during recess and lunch or while outside on the playground or on school property.
- It is recommended that students do not bring personal digital devices to school.
- If students do have personal digital devices in their possession during the school day, it is expected that they will respect the learning environment within the school and classrooms and ensure that all phones are turned off from 8:40 am to 2:45 pm and they are placed securely in backpacks or in a secured cabinet in their classroom. If there is an emergency, or a student needs to call parents during the school day, the office staff will gladly assist them.
- With regards to all personal electronic devices, please note that if they are reported lost or stolen, the school cannot be held responsible. We thank you for your support in this area.

Back to School

REMINDERS

As we start a new school year here are some reminders to help us settle and get back into our work and school routines:

- Pack a snack, water bottle and lunch for your child every day.
- Please pack cutlery--there will be limited available at school. We have noticed this week several students asking for utensils, please check the lunch bags to ensure forks and spoons are there!
- Students are invited in to the school at 8:40am warning bell. Dismissal is at 2:45pm and pick up is at the external door to your child's classroom.
- Dress for the weather. Students go outside in ALL weather (unless it is deemed unsafe).



Sharing Fridge

Last year each Richmond school was provided with a sharing fridge. Our fridge is located right at the main entrance, just outside the staff room.

This year through the Ministry's Feeding Future snacks will be available again for students as needed. We will be reminding students of how to access the snacks which offers perishable (in the fridge) and non perishable options.

We aim to promote an environment where we trust our students to make mindful choices when getting a snack. We want them to be able to choose their own snack, without an adult looking over their shoulder or requiring them to ask each time they would like something to eat. We ask students to think before taking snacks and to remember why the fridge and food is there. It is to provide for those that may need the food much more than us. Having said that, please see below:

Students were reminded at our assembly today!

Sharing Fridge Reminders:

- Students may come and get a snack before recess or at lunch eating time--not during instructional time
- They may choose one snack to take back to their class or outside
- Ensure wrappers and containers are placed in their appropriate bins
- Snacks are for when one needs them, not wants them and yes, some days it may be two snacks!

FRIDAY

FUNNIES

What do you call an illegally parked frog?

A toad--towed (get it?!)